

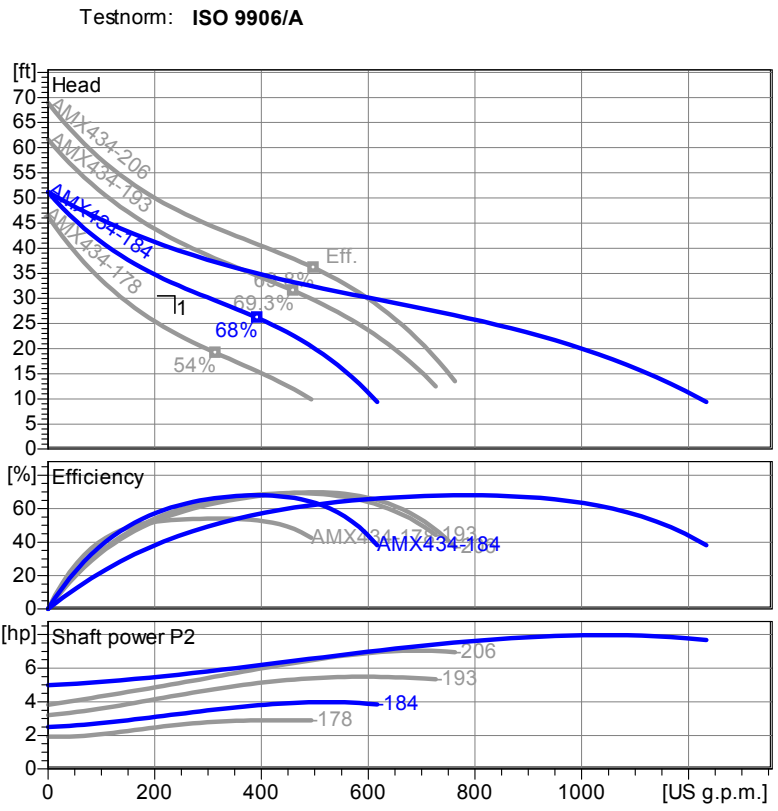
Operating data	
Flow	238.2 US g.p.m.
Head	30.6 ft
Shaft power P2	3.34 hp
Pump efficiency	63.4 %
Required pump NPSH	
Pumpe type	Single pump
No. of pumps	2
Fluid	Wastewater

Pump	
Pump Code	AMX434-184/4D/C
Impeller	Single channel impeller
Impeller size	7 1/4"
Solid size	3 inch
Discharge port	4" ANSI
Suction port	

Motor	
Rated voltage	460 V
Frequency	60 Hz
Rated power P2	4.0 hp
Rated speed	1750 rpm
Number of poles	4
Efficiency	80 %
Rated current	5.9 A
Degree of protection	IP 68

Materials	
Motor housing	Cast Iron ASTM A48;Cl.40B
Impeller	Cast Iron ASTM A48;Cl.40B
Pump housing	Cast Iron ASTM A48;Cl.40B
Wear ring	Bronze ASTM B144
Motor shaft	AISI 430 F Stainless Steel
Bolts	AISI 304 Stainless Steel

Elastomers	
	Nitrile Rubber
Mechanical seal on motor side	SiC / SiC
Mechanical seal on medium side	SiC / SiC
Lower Bearing	Double row angular ball bearing
Upper Bearing	Deep Groove Ball Bearing



Wet well installation with auto coupling system (C/D Motor, 142...184)  
 Dimensions in inch, letters see table

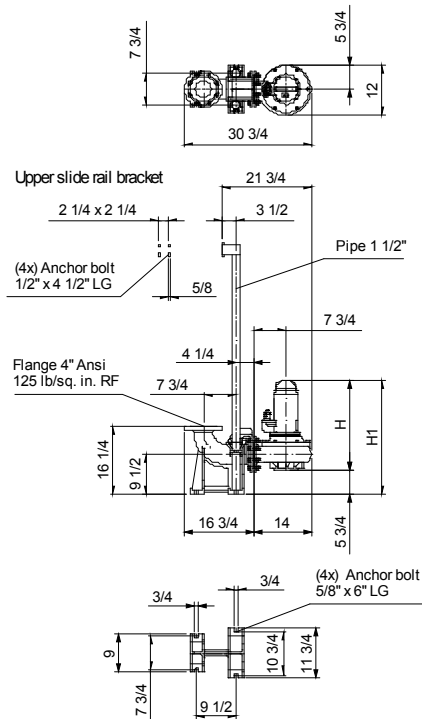


Table Dimensions (inch)	
H	21 3/4
H1	27 1/2

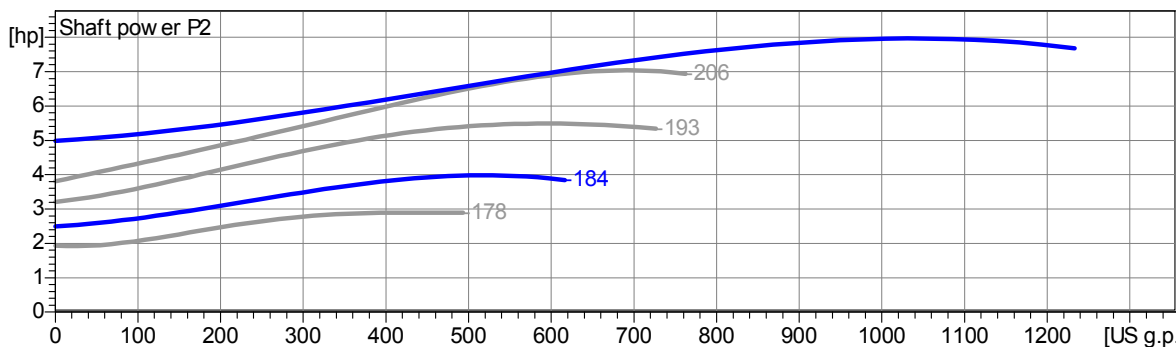
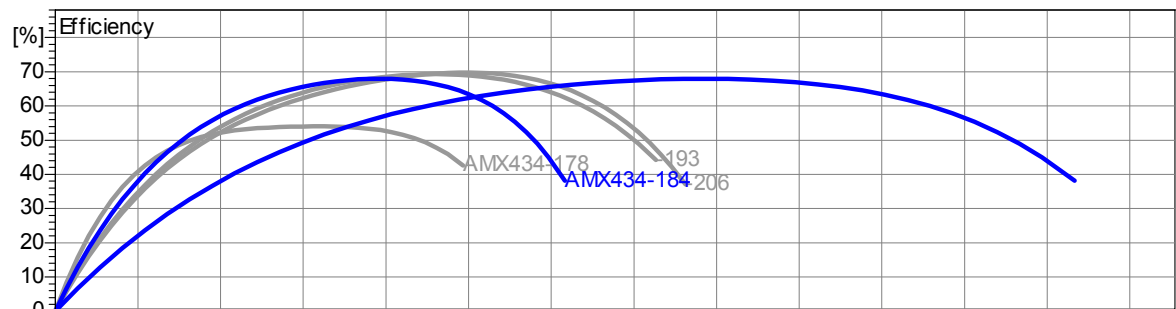
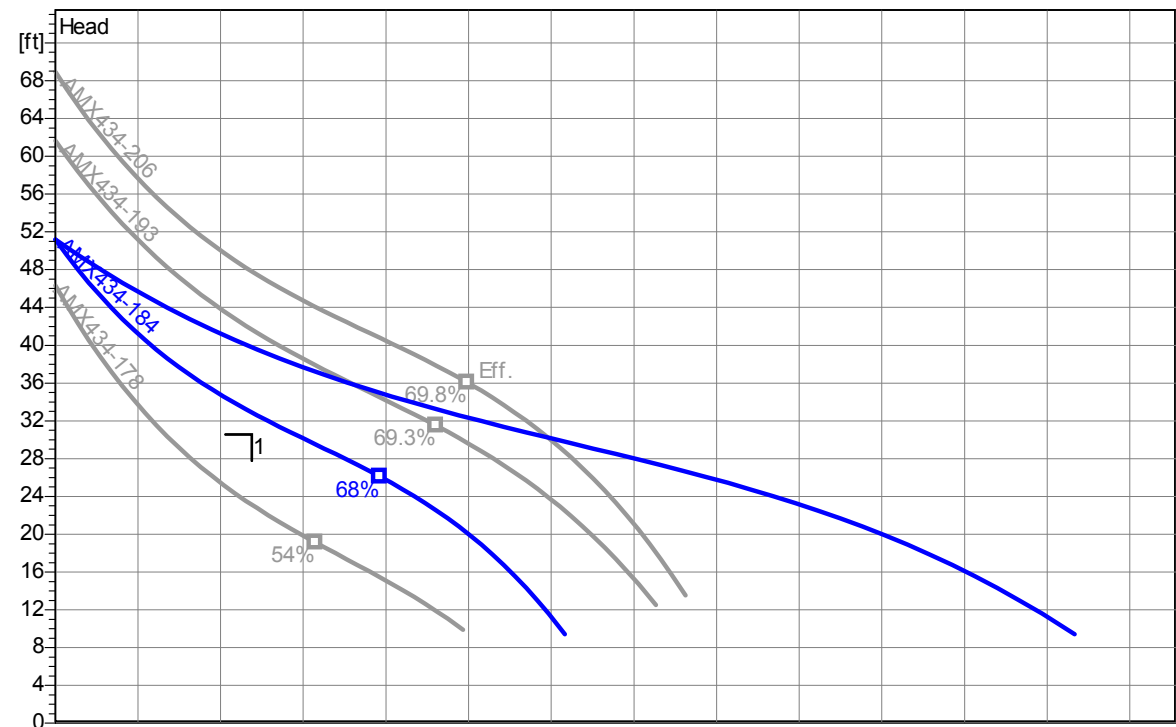
# Performance Curve

AMX434-184/4D/C

Impeller						
Impeller type: Single channel impeller	Solid size 3 inch	Ø:	Max. Ø: 8 1/8"	Min. Ø: 7"	Sel. Ø: 7 1/4"	
Operating data						
Speed: <b>1750 rpm</b>	Frequency: <b>60 Hz</b>	Duty point: <b>Q = 238.2 US g.p.m.H = 30.57 ft</b>	Shaft power P2: <b>3.34 hp</b>		Discharge port: <b>4" ANSI</b>	

Power data referred to: Water, clean [100%]; 68°F; 62.322lb/ft³; 1.0818E-5ft²/s

Testnorm: ISO 9906/A



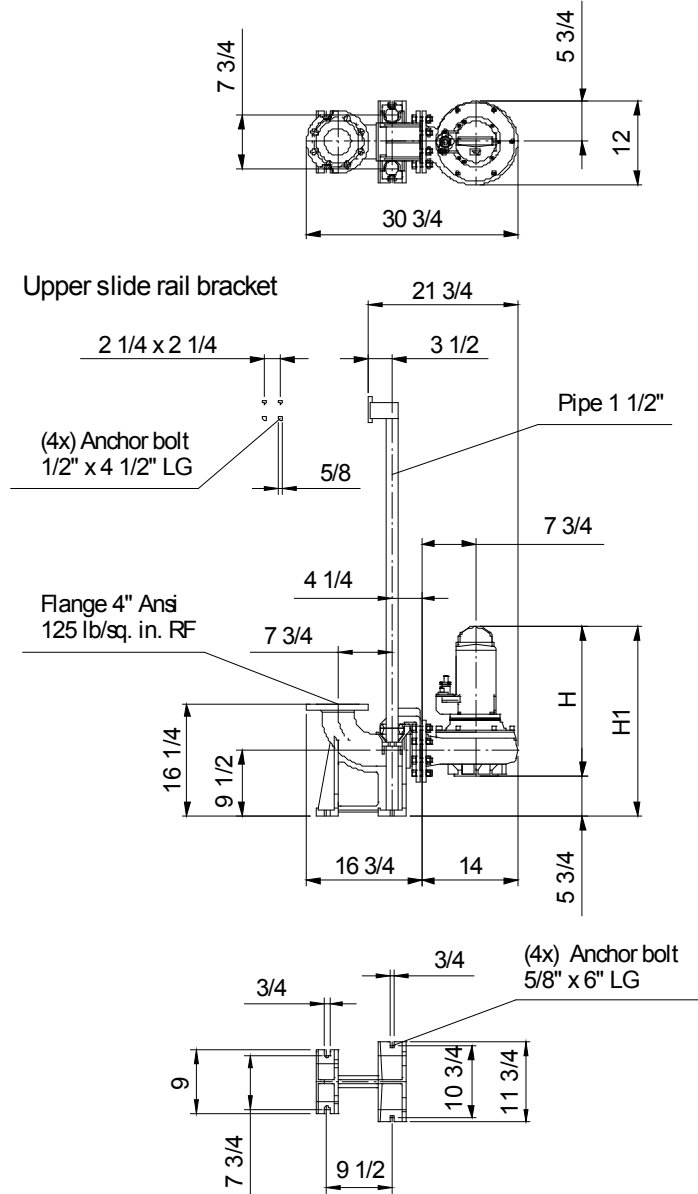
2.0 - 29.01.2009 (Build 168)

Project <b>ESPOL 001</b>	Project no.: <b>ESTACIÓN DE BOMBEO DE AGUAS RESIDUALES</b>	Created by: <b>EMB, CNR</b>	Page: <b>2</b>	Date: <b>2010-12-04</b>
-----------------------------	---	--------------------------------	-------------------	----------------------------

# Dimensions

AMX434-184/4D/C

Wet well installation with auto coupling system (C/D Motor, 142...184)  
Dimensions in inch, letters see table



**Table Dimensions**

( inch )

H	21 <sup>3</sup> / <sub>4</sub>
H1	27 <sup>1</sup> / <sub>2</sub>

Operating data				
<b>Flow</b>	<b>238.2</b>	<b>US g.p.m.</b>	<b>Head</b>	<b>30.57</b> <b>ft</b>
<b>Shaft power P2</b>	<b>3.3</b>	<b>hp</b>	<b>Static head</b>	<b>25.36</b> <b>ft</b>
<b>Pump efficiency</b>	<b>63.4</b>	<b>%</b>	<b>Required pump NPSH</b>	<b>ft</b>
Pumpe type	Single pump		No. of pumps	2
Fluid	Wastewater		Temperature	70 °F
Density	62.3	lb/ft <sup>3</sup>	Kin. viscosity	1.047E-5 ft <sup>2</sup> /s

Pump				
Pump Code	AMX434-184/4D/C		Speed	1750 rpm
Suction port			Head	Max. 51.2 ft
Discharge port	4" ANSI			Min. 9.4 ft
Impeller type	Single channel impeller		Flow	Max. 616.6 US g.p.m.
Solid size	3	inch	Pump efficiency max.	68 %
Impeller Ø	7.24	inch	Required rated power max. P2	4.0 hp

Motor				
Motor design	Submersible motor		Insulation class	F
Motor name	AM136.5D/4/3		Degree of protection	IP 68
Frequency	60	Hz	Temperature class	T4
Rated power P1	5.0	hp	Ex	
Rated power P2	4.0	hp	Explosion protection	
Rated speed	1750	rpm	Efficiency at % rated power	100% 80 %
Rated voltage	460	V 3~		75% %
Rated current	5.9	A		50% %
Starting current, direct starting	0.0	A	cos phi at % rated power	100% 0.87
Starting current, star-delta	0.0	A		75%
Starting mode	Directly			50%
Power cable	10G1,5		Control cable	
Type of power cable	H07RN-F		Type of control cable	
Cable length	32.809 ft		Service factor	1.15
Shaft seal	Mechanical seal on motor side		SiC / SiC	
	Mechanical seal on medium side		SiC / SiC	
Bearing	Lower Bearing		Double row angular ball bearing	
	Upper Bearing		Deep Groove Ball Bearing	
Remarks				

Materials / Weight			
Motor housing	Cast Iron ASTM A48;Cl.40B	Bolts	AISI 304 Stainless Steel
Pump housing	Cast Iron ASTM A48;Cl.40B	Elastomeres	Nitrile Rubber
Impeller	Cast Iron ASTM A48;Cl.40B		
Wear ring	Bronze ASTM B144		
Motor shaft	AISI 430 F Stainless Steel		
Weight aggregat	156.53 lb		

Project <b>ESPOL 001</b>	Project no.: <b>ESTACIÓN DE BOMBEO DE AGUAS RESIDUALES</b>	Created by: <b>EMB, CNR</b>	Page: <b>4</b>	Date: <b>2010-12-04</b>
-----------------------------	---	--------------------------------	-------------------	----------------------------