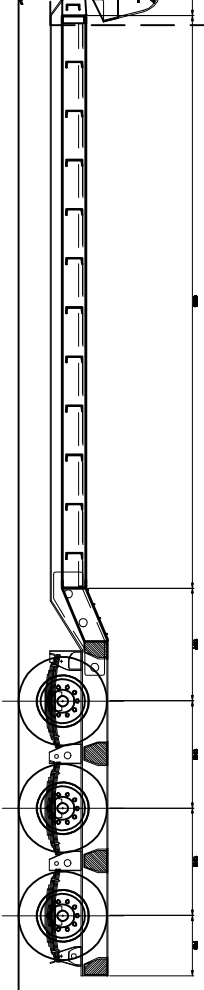
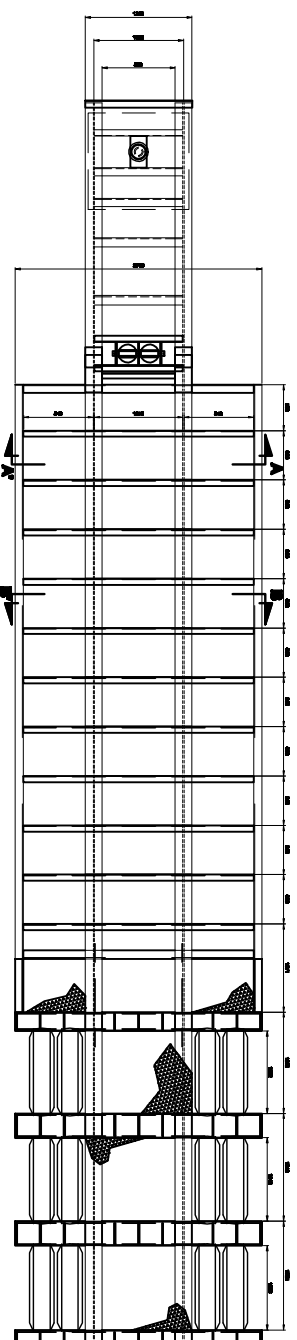
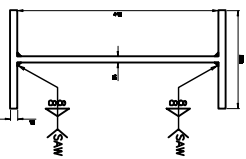


Ver Detalle A

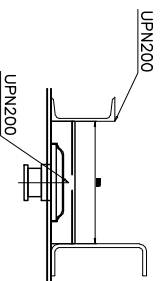
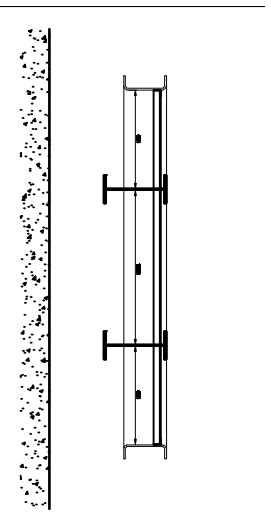


DETALLE DE SOLDADURA VIGAS PRINCIPALES

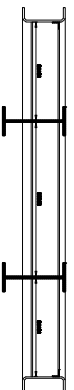


CORTE A-A'

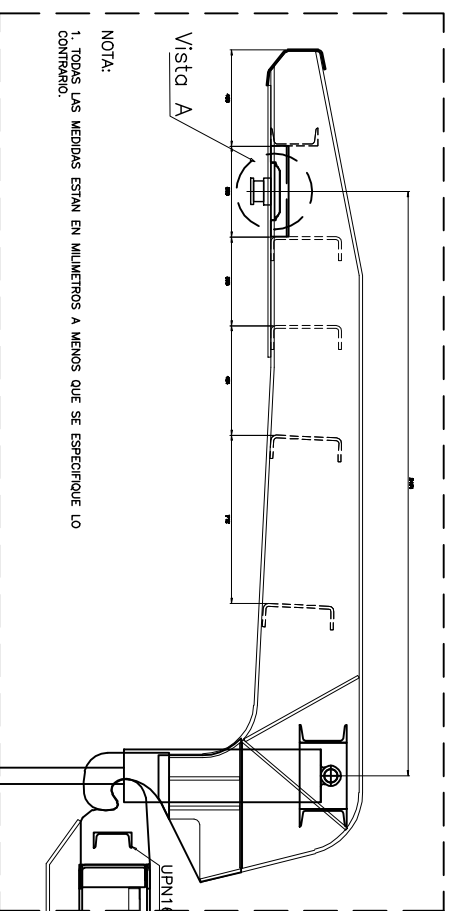
Vista A



CORTE B-B'



DETALLE A



NOTA:
1. TODAS LAS MEDIDAS ESTAN EN MILIMETROS A MENOS QUE SE ESPECIFIQUE LO CONTRARIO.

Vista A

UPN160

TITULO:
DETALLES CONSTRUCTIVOS 1

TIPO DE CUBILOS:
CAJA BAJA CAP. 45 TON

GENERALIA DE DISEÑO
SABER, PAREJA
Y HO. INGENIERO SABERTEC

PLANO No.:

6

