

# FOTOGRAFÍAS DE MUESTRAS DE SUELO

**TESIS DE GRADO**

**“Obtención de Ecuaciones de Correlación para Estimar las  
Velocidades de Las Ondas de Corte en los suelos de la  
Ciudad de Guayaquil”**

**2006**

**FICT – ESPOL**

**JENNY RAMIREZ    EDDIE TANDAZO**

# GYE-07C 216 ECU Ramón Unamuno

Prof: 4.0-4.5m



Prof: 6.0-6.5m



Prof: 7.0-8.0m



Prof: 9.0-9.5m



Prof: 10.50-11.0m



Prof: 15.0-15.5m



# GYE-07C 216 ECU Ramón Unamuno

Prof: 16.5-17.0m



Prof: 19.5-20.0m

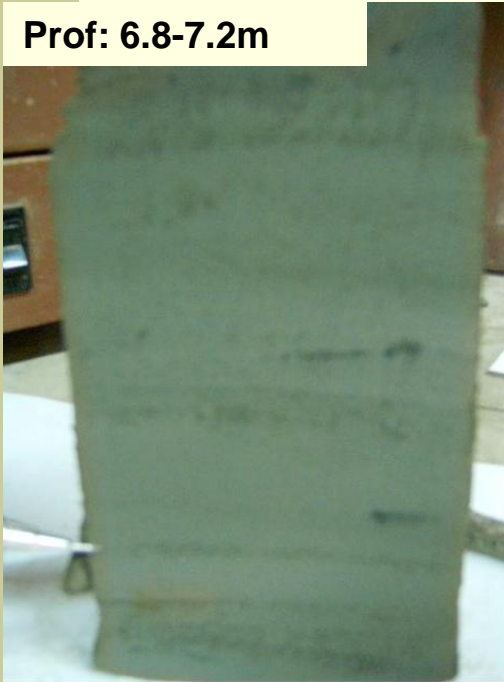


Prof: 24.0-24.5m



# GYE-06S 214 ECU Sopeña

Prof: 6.8-7.2m



Prof: 12.5-13.0m



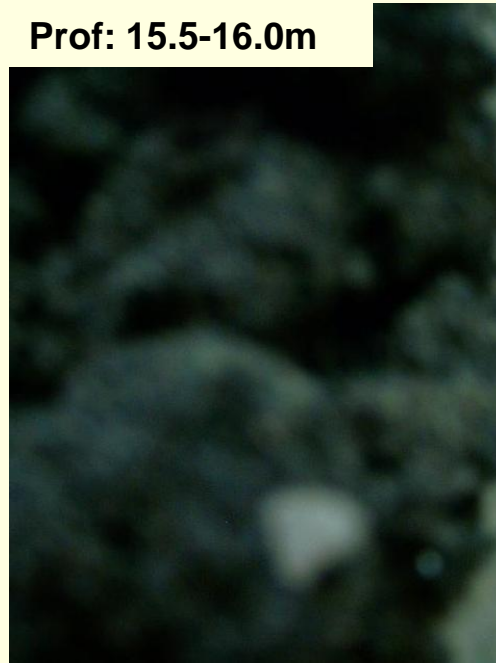
Prof: 14.0-14.5m



Prof: 14.0-14.5m

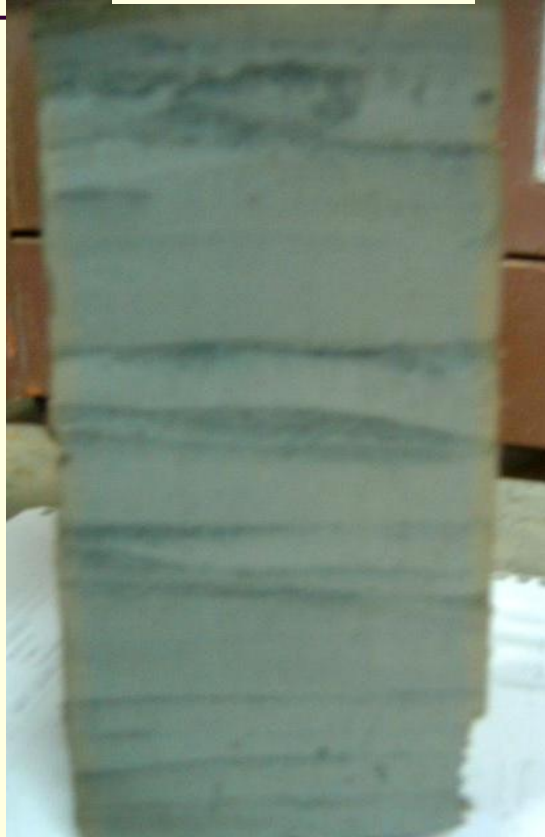


Prof: 15.5-16.0m



## GYE-05S 213 ECU Pradera 2

Prof: 6.5-7.0m



Prof: 13.30-14.0m



**GYE-04S 212 ECU Stella Maris**



**Prof: 4.0-4.5 m**



**Prof: 5.5-6.0 m**



**Prof: 7.0-7.5m**

## GYE-02CH 210 ECU Puerto Azul

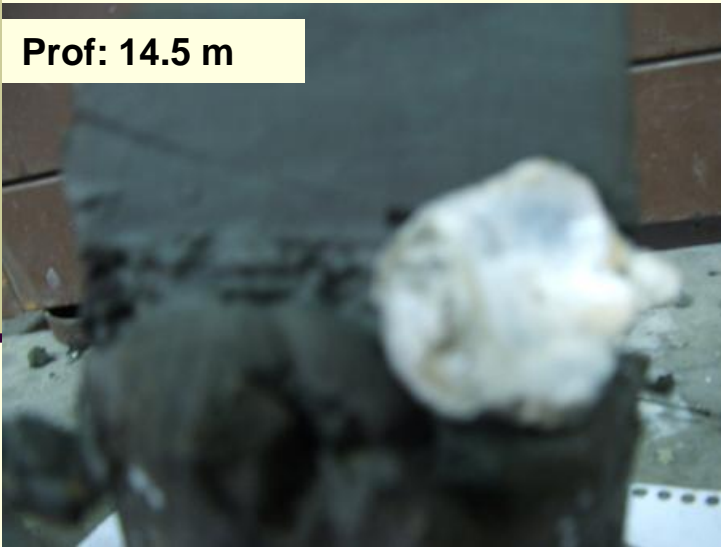
Prof: 10.0 m



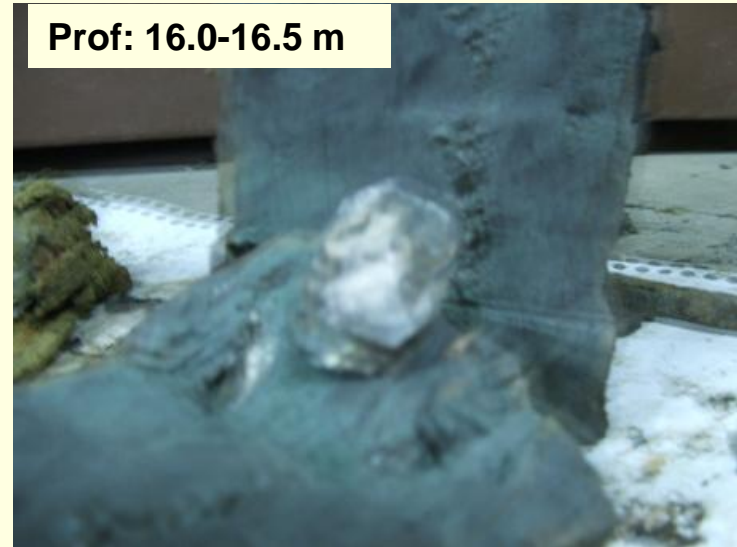
Prof: 13.0 m



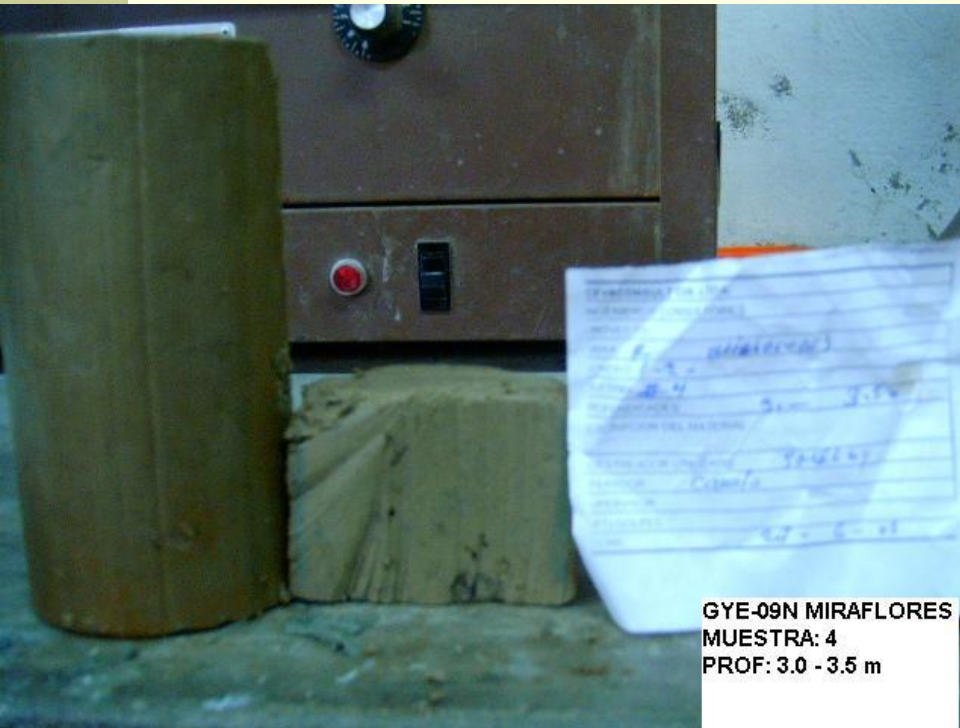
Prof: 14.5 m



Prof: 16.0-16.5 m



## GYE-09N 221 ECU Miraflores



GYE-09N MIRAFLORES  
MUESTRA: 4  
PROF: 3.0 - 3.5 m



GYE-09N Miraflores  
Muestra: 14  
Prof: 18.0-18,50 m



## GYE-08N 217 ECU Aeropuerto

Prof: 8.0-8.5 m



Prof: 9.5-10 m

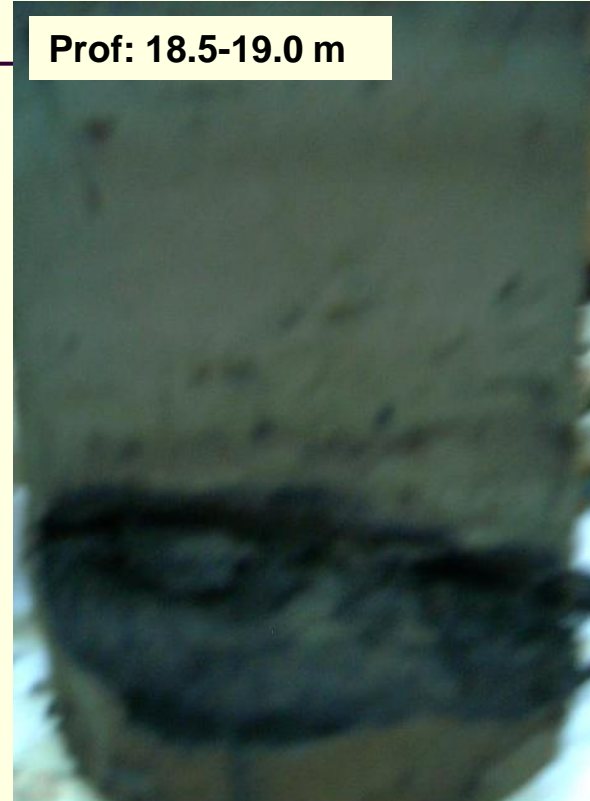


## GYE-13N 219 ECU Vergeles

Prof: 10.0-10.5 m



Prof: 18.5-19.0 m



## GYE-10N 218 ECU Garzota

Prof: 11.5-12.0 m



Prof: 17.5-18.0 m



Prof: 20.5-21.0 m

