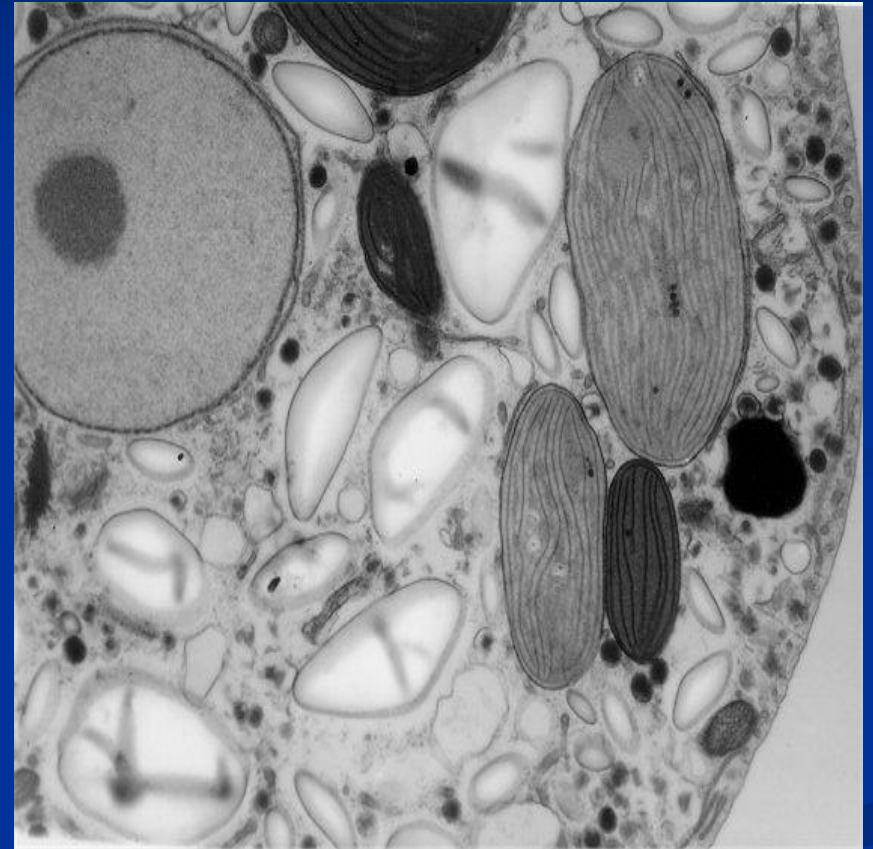
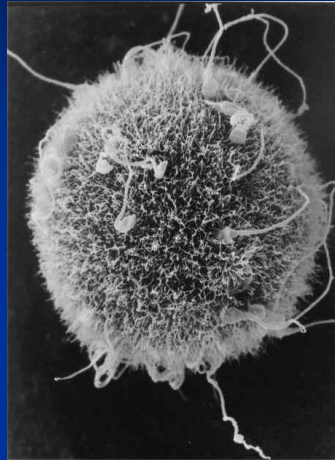
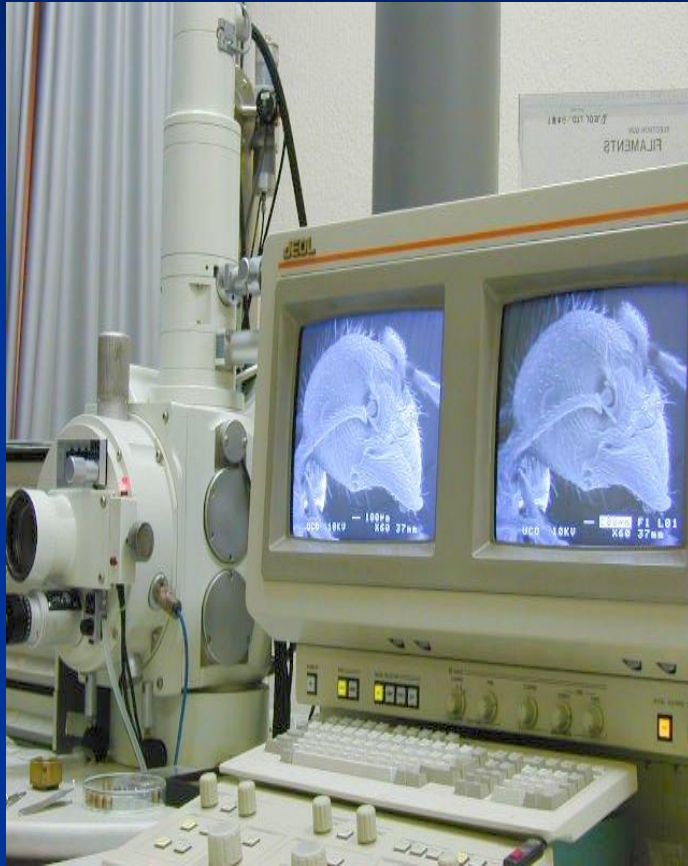


# Microscopia electrónica de transmisión.

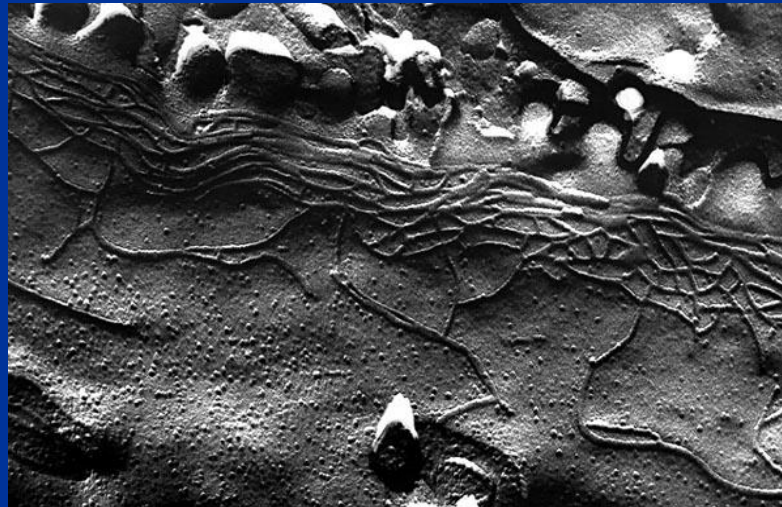


Microscopia de un alga roja antes de formar su pared

# Microscopia electrónica de barrido.

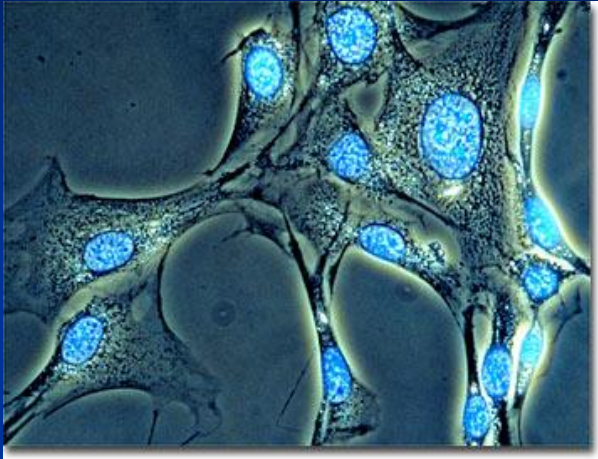


Óvulo de hamster sin zona pelucida con espermatozoides

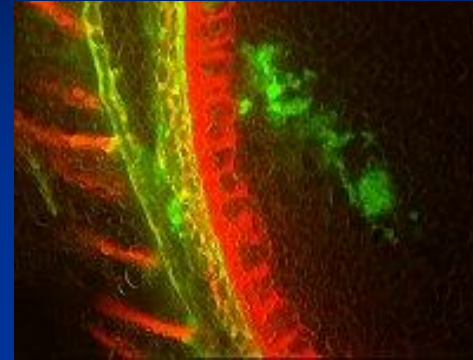


Crio fractura de epitelio gástrico vista por microscopia de barrido

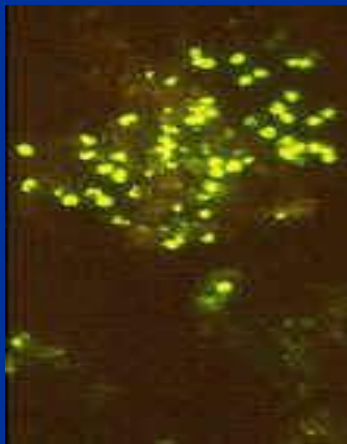
# Microscopia de fluorescencia.



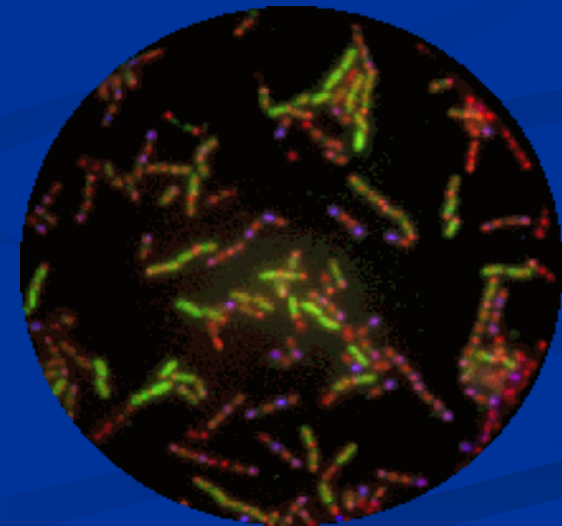
Fibroblastos  
teñidos con el  
fluorocromo FITC



Endosperma  
siendo  
colonizada  
por bacterias

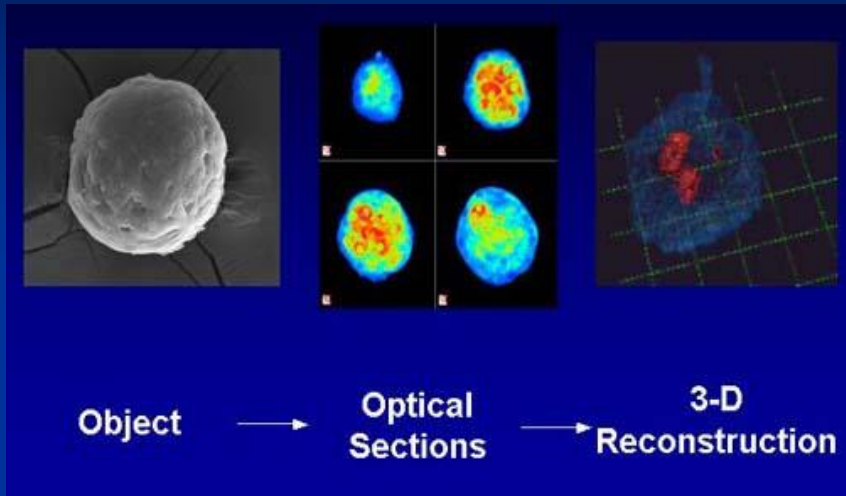


Bacterias en fumarolas marinas  
adheridas a un cristal de sulfuro

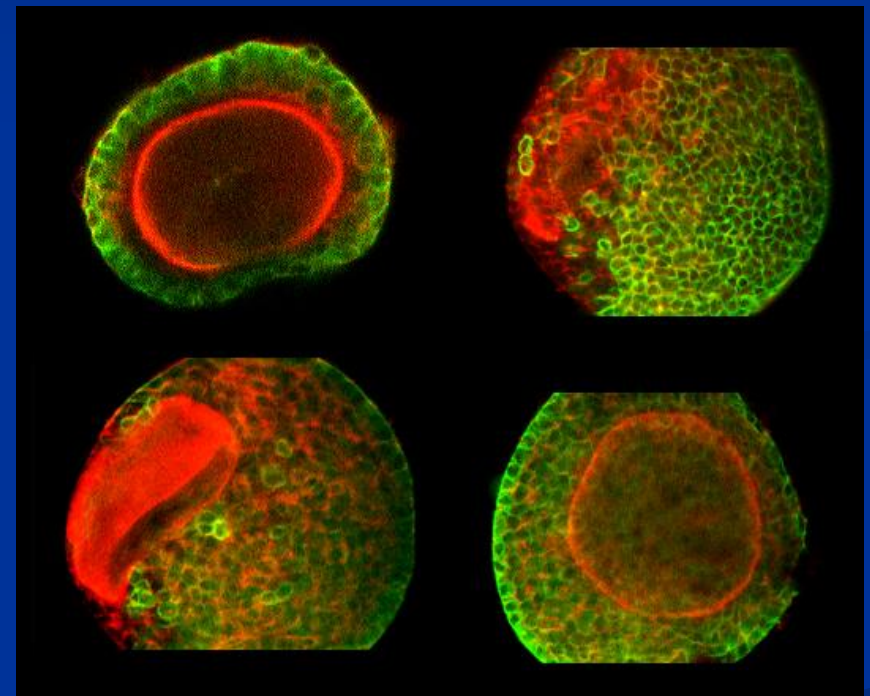


*Bacillus subtilis* esporulando teñidos  
con FITC, DAPI y  $\beta$ galactosidasa.

# Microscopia confocal.



Secuencia de  
microscopia  
confocal



Microscopia confocal de  
fluorescencia

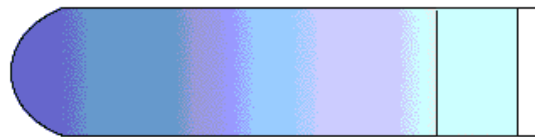
# Fraccionamiento subcelular y centrifugación por gradiente



Fracciones	Contenido	g*min
N	núcleos	600*10min
M	mitocondrias	3000*10min
L	lisosomas	25000* 10min
P	microsomas y membrana	100000* 30min
S	fracción soluble	

Separación de proteínas en gradiente de sacarosa

$$s = \frac{v}{c} = \frac{2/9 r^2 (d-d_0)}{\eta}$$

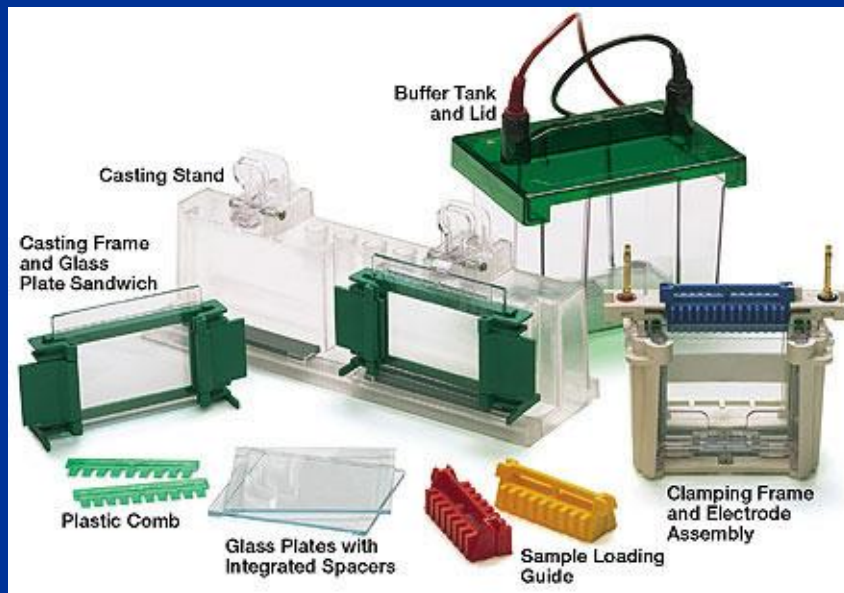


5 to 30 % Sucrose gradients      Protein sample

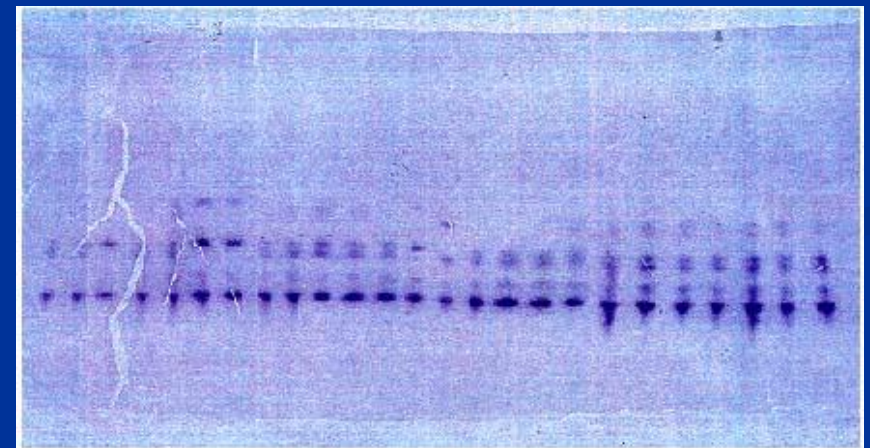
Molecules sediment according to their size, shape and density.

# Estudio de biomoléculas

electroforesis de  
proteínas



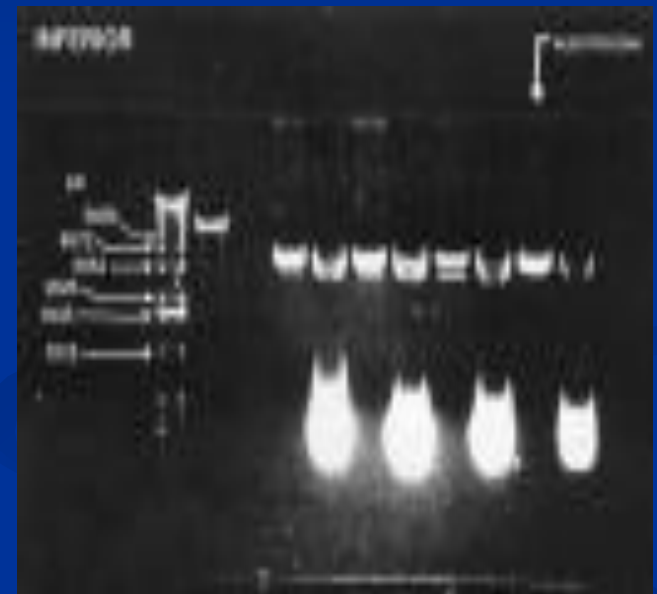
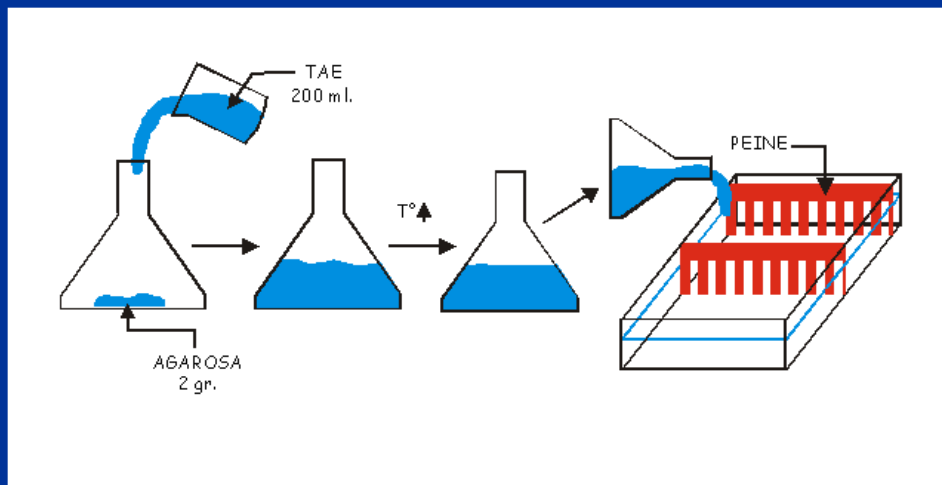
Cámaras de  
electroforesis



Gel de poliacrilamida teñido con azul  
de coomasie

# Electroforesis de ADN

## Geles de agarosa



Gel de ADN teñido con bromuro de etidio y visualizado con luz UV