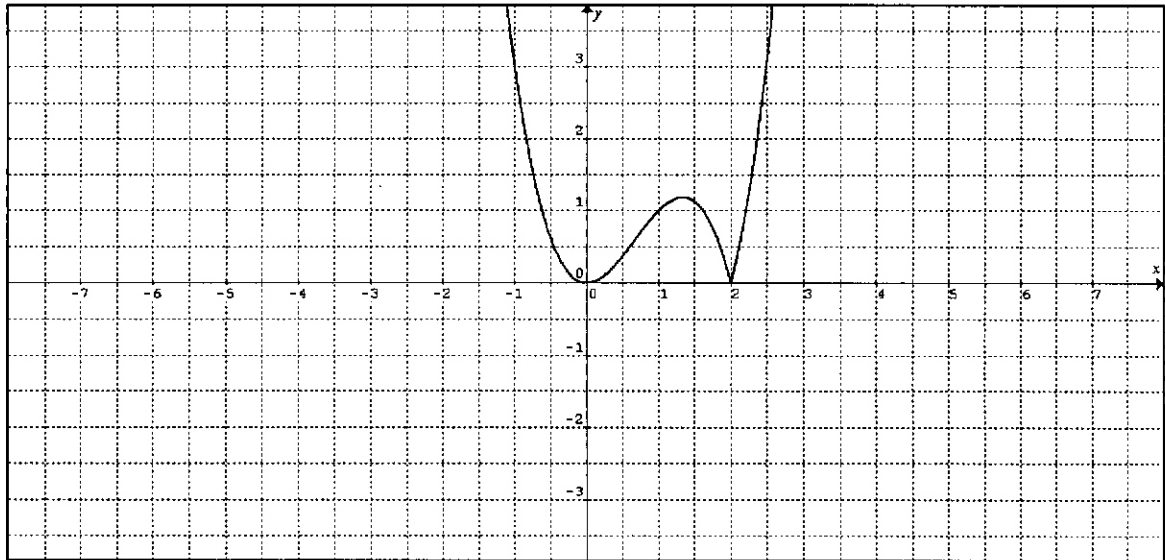
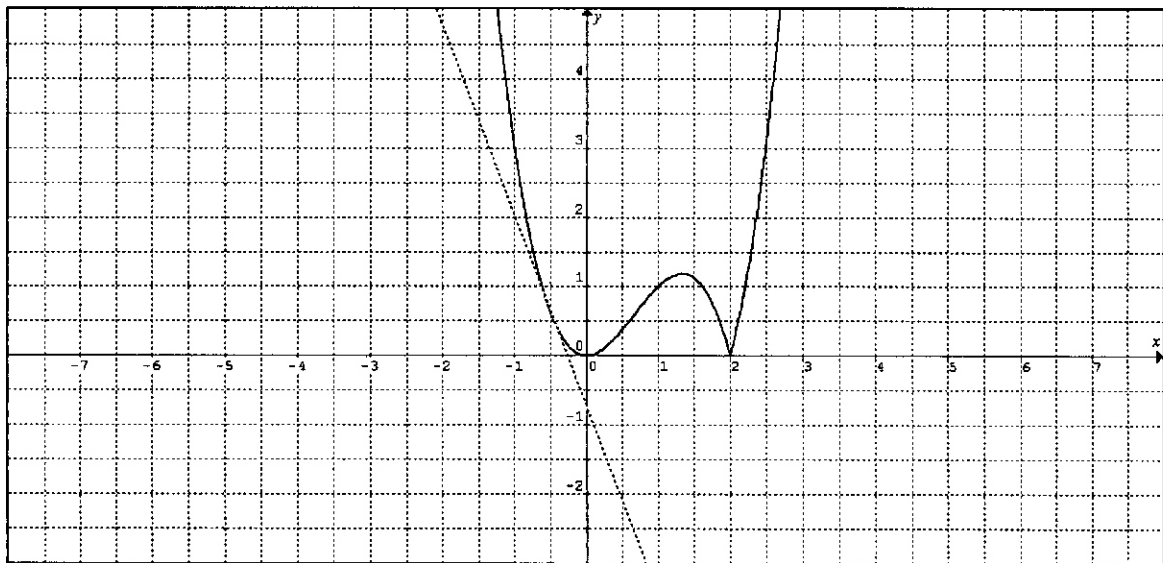


b. (5 puntos) Considere la gráfica mostrada a continuación de una función de variable real f



estime, de ser posible:

i. $f'(-\frac{1}{2})$



$$f'(-\frac{1}{2}) = \frac{\Delta y}{\Delta x}$$

$$\cong -\frac{0,6}{0,2}$$

$$\cong -3$$