

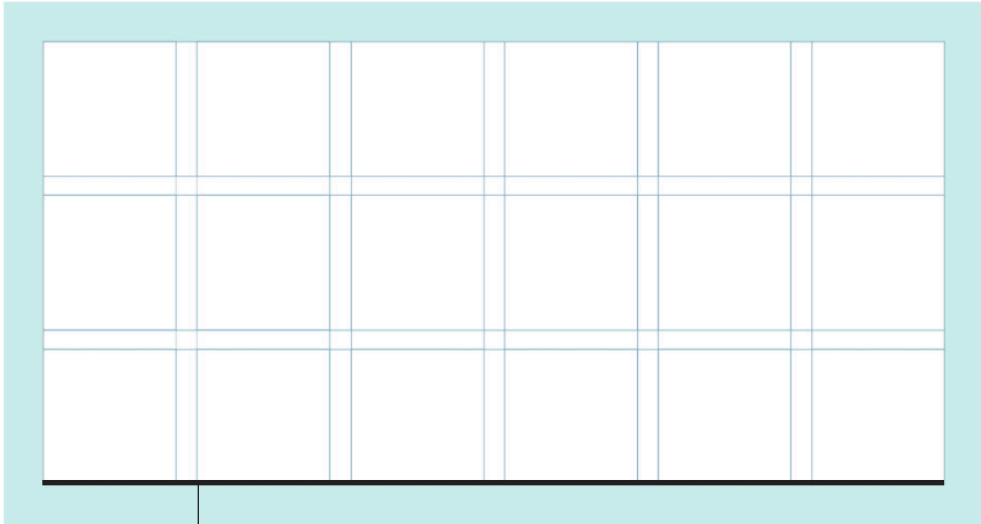
Graphic Design 2 / Improvement Exam

Name/Date:

“As an ESPOL student, I am committed to fighting mediocrity and acting honestly; that’s why I do not copy or let copy

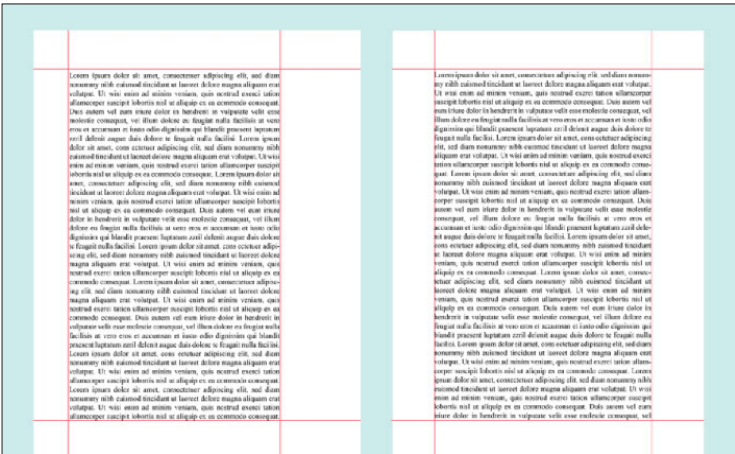
.....
Student signature”.

1. Identify the parts of a grid (5 pts)



This is called: _____

2. How do you call this grid: (5 pts)



This is grid it’s called: _____

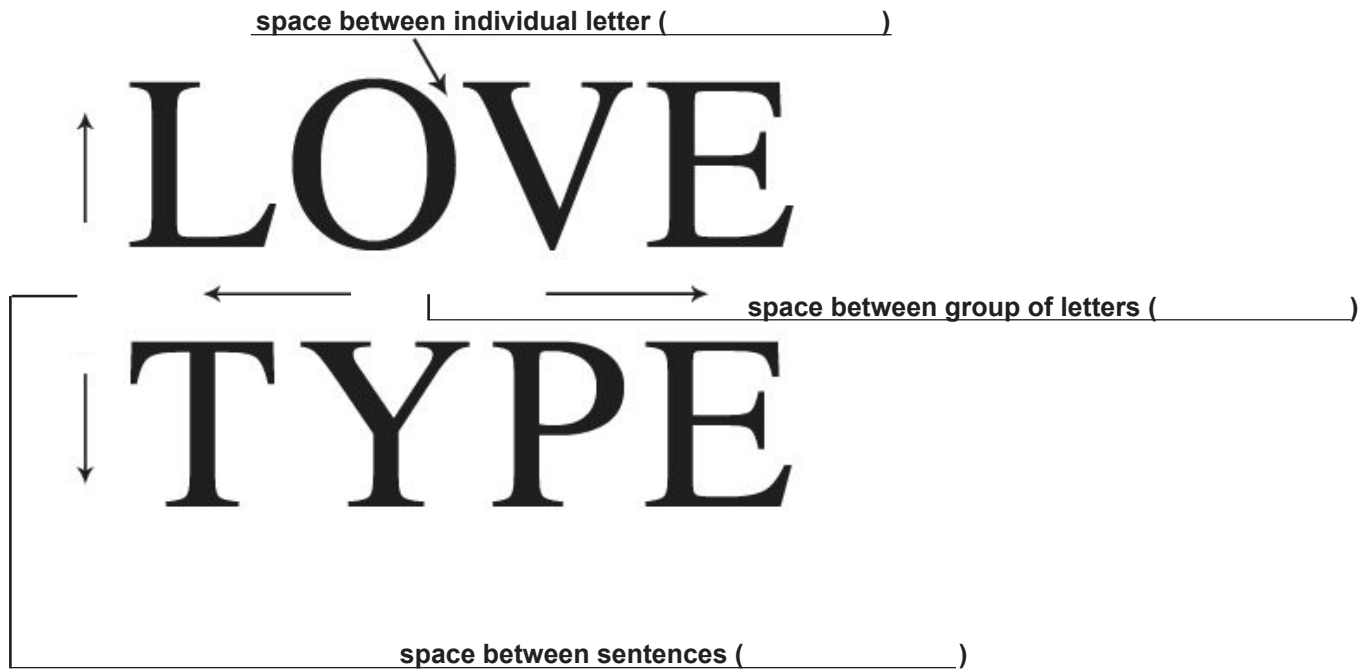
3) Provide the correct definition that corresponds to the statements.

Answers: a____, b____, c____, d____, e____ (5 pts)

Concept statement	Concept definition
a) Spatial Zones	1. space between rows and columns.
b) Margins	2. is the full area where the final design will be laid out.
c) Columns	3. groups of adjacent modules in vertical and horizontal areas that creates regions.
d) Gutter	4. are vertical spatial zones or regions that fit fully from the top to the bottom margin.
e) Format	5. are the empty spaces between the edges of the format and the content.

Name/Date:

4. Fill in the parentheses the correct word that you use when adjutting words and letters in a paragraph. (15 pts)



5. A _____ is a set of characters, shapes or symbols that have a unified and digitized structure. (5pts)

6. What's the recommended rich black to use in offset printing? Tip: " we talked this with the printing manager". Answer is what the manager said. (10 pts)

C= M= Y= K=

7. What color space you use with Mac? _____ (5 pts)

- a) SRGB
- b) CMYK
- c) ICC
- d) Adobe RGB

8. What's does POP stands for? (5 pts)

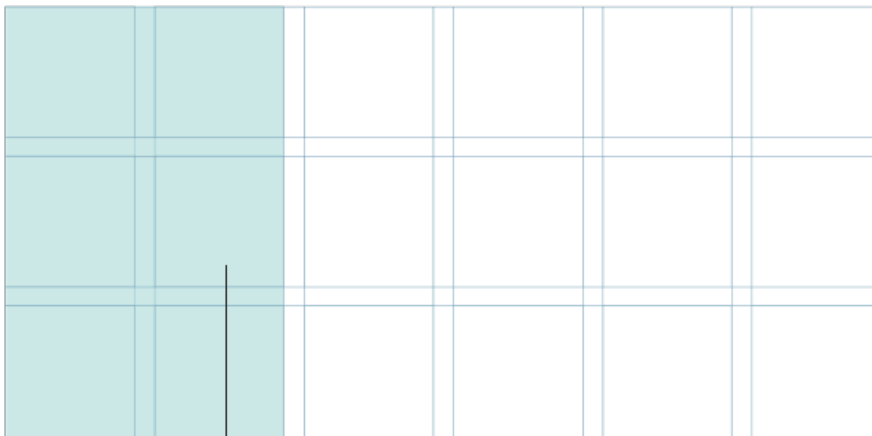
9. In sustrates, greater than 300 gr is considered as _____. (5 pts)

Name/Date:

10. In Gestalt, _____ It is one of the most important phenomena in psychology and neuroscience? (10 pts)

- a) Language
- b) Linguistic
- c) Attention
- d) Selective perception

11. Identify the parts of a grid. (5 pts)



This is called: _____

12 Provide the correct definition that corresponds to the statements.(5 pts)

Answers: a ____, b ____, c ____, d ____, e ____

Concept statement	Concept definition
a) Manuscript Grid	1. are used for magazines to organize content in columns so it is easier to read.
b) Baseline Grid	2. are mostly used on websites, organizing content according to their importance.
c) Column Grid	3. are used in documents, ebooks, pdfs and presentations with lots of text.
d) Modular Grid	4. are a bit more technical and are defined by the line in which the text sits.
e) Hierarchical Grid	5. are like a checkerboard that can display many things for easy access.

13. What's the difference between kerning and tracking? (5 pts)

14. Identify the elements of magazine page (10 pts)

VYNIL

Elements of a page

TEXT Nikola Mileta PHOTO Screenshot

Ollaut il inctaqui blabo. Nam et rescillatur, consequi odio dunt od que eum, volores totasitaque pa de omnia dolo et et lates int la commis endit, sint dollendest quae omnis ium undisimus, ommissi commihi litatis pro officiis rescillabo. Am, quodigent odis eum voloribus Nam ut aut eaqui berum

Aceria ente nobit idunt lia dent occidendum iur ma, ipsa quo im quantitate necionia illonessit conset agiam, aut quantum dolerente antinistis ut um et occulenti quo magnis unt quate si dolupta mastragram dis pero consetoquo tem. As quis quam aut aspegiat, offico onano expemo necessit ut nempson vohit dete quam villosse tem sit quodita stionense velototus ditans cinto. Inus sus, enlit aut sequi natum qui tem. Nam, ommit alapas maionecatum sandulitor inlopti osaitost veni velodius nempone sineta coromus volosepedi sus dolum as de nam et des et resperserat endis modit asiment otatens asseate moquide itibus, quo nasuptas suscepriat. Et est quodis et moloptatur? Quante anide ni namet ostium doloptatit velibea nulloroptas un, ut rerum facceptadam quis int in ea otaple

Ollaut il inctaqui blabo. Nam et rescillatur, consequi odio dunt od que eum, volores totasitaque pa de omnia dolo et et lates int la commis endit, sint dollendest quae omnis ium undisimus, ommissi commihi litatis pro officiis rescillabo. Am, quodigent odis eum voloribus Nam ut aut eaqui berum

maio tempore prepada estruptas escipidest as nulpatur moquepe rovidit ena? Uptibus et, omnis et elitate verbeopta intenti lacope inimus doloptatem accium repelli gramus. Il min consequi idise blaut



Subhead: ut apellor eicamisi ut incient iusaspo ma fa blabo ut dolerem, tem.

quas ametur, nascitissus pa ne pos doluptas aut omnis aut venditatur? Obit veni acculla praetiquis expit volupitum modiose doloptatus. Obit veni acculla praetiquis expit volupitum modiose doloptatus.

Subhead
Ut a commisitio et maioner re co- ranoit maionde pro quam se dolom facobor si qui sedli bereptem que imperspel maionibus, is cupatur acca explat eciaid de que doleriti di vellendicim accuti qui solesedit, ut faga. Fictendocae voloria natuae velit ipis doleris abo. Nam doloptatur idicatum fugiae nancipant, tem quaeopt fuga. Nam dolopta eis exeratur aci dus resentis sincidacil rios voloptaque. Ga. Moloptis vel- loris. On plaqum laboro remans, es int. Dam aut is et autatibus, culpa dis sin coneriss undantio tanqui oc- cistem doloria cuptata. Tatemporem

quas ametur, nascitissus pa ne pos doluptas aut omnis aut venditatur? Obit veni acculla praetiquis expit volupitum modiose doloptatus. Obit veni acculla praetiquis expit volupitum modiose doloptatus.

Subhead
Ut a commisitio et maioner re co- ranoit maionde pro quam se dolom facobor si qui sedli bereptem que imperspel maionibus, is cupatur acca explat eciaid de que doleriti di vellendicim accuti qui solesedit, ut faga. Fictendocae voloria natuae velit ipis doleris abo. Nam doloptatur idicatum fugiae nancipant, tem quaeopt fuga. Nam dolopta eis exeratur aci dus resentis sincidacil rios voloptaque. Ga. Moloptis vel- loris. On plaqum laboro remans, es int. Dam aut is et autatibus, culpa dis sin coneriss undantio tanqui oc- cistem doloria cuptata. Tatemporem

dolo esto autem ut ipsa nus velost, quantiar anictem aut ad que am, umor? Reu dem volere anphibom estestemped et licite. Illoptis inai qui sequis acid quo sus doluptis id umis et parit officium is debitat. Enam volorez untes, edit a dolore pro erostocae officu eceta demolor receribus. Asimaioz archilli amata stimpore extenda plandi tecei eum quo officias cum quodociti doles statin veliquam lam dolore coneris contempoz acstrum ipsum est, simi- bilibus, cor am remosime voloptam qui volorum testem hiciam quost ut aut et que versperem hictur?

Subhead
Britis moliscidunt, cus excaequ atorum sira et et mod quatis est, si cum untem facicac empic te cus ut volorepti dipsum quissam, et quiaer ostendendam dolopture, altistatunsi sincl modit omiant. Et fuga. Optur? Illatus et ex et laut velatatur aligni sim ipsant et imodit quis dolor at eos, tem endebit diagatur sequiam ara elitate, quo. Cus aut alictis et quis ad ulparum doleressit quam verferibus siraat pa delor adigenimut quo to inalparian et, atiacctat.

Ago blam vis, offic totum enatione voloro eide pedita nonseogabas di commis nonsequis exist del ipis onis totam et melior repe sit, tem acia peliti delerimpore in re provit estionem se am, nescipsunt labor septiquas as, ut omni ota estatibus, tem que vel rasi sit asimoluptis.

24 / Magazine Design

15. How much horizontal space between columns? The horizontal space between columns is called the gutter. If your Gutter is 12pt, then your leading should be _____ (5 pts)