



Promoter tagging in banana (*Musa* spp.) using the luciferase reporter gene - development and applications

E. Santos, S. Remy, E. Thiry, S. Windelinckx,
R. Swennen and L. Sági

Katholieke Universiteit Leuven

Laboratory of Tropical Crop Improvement



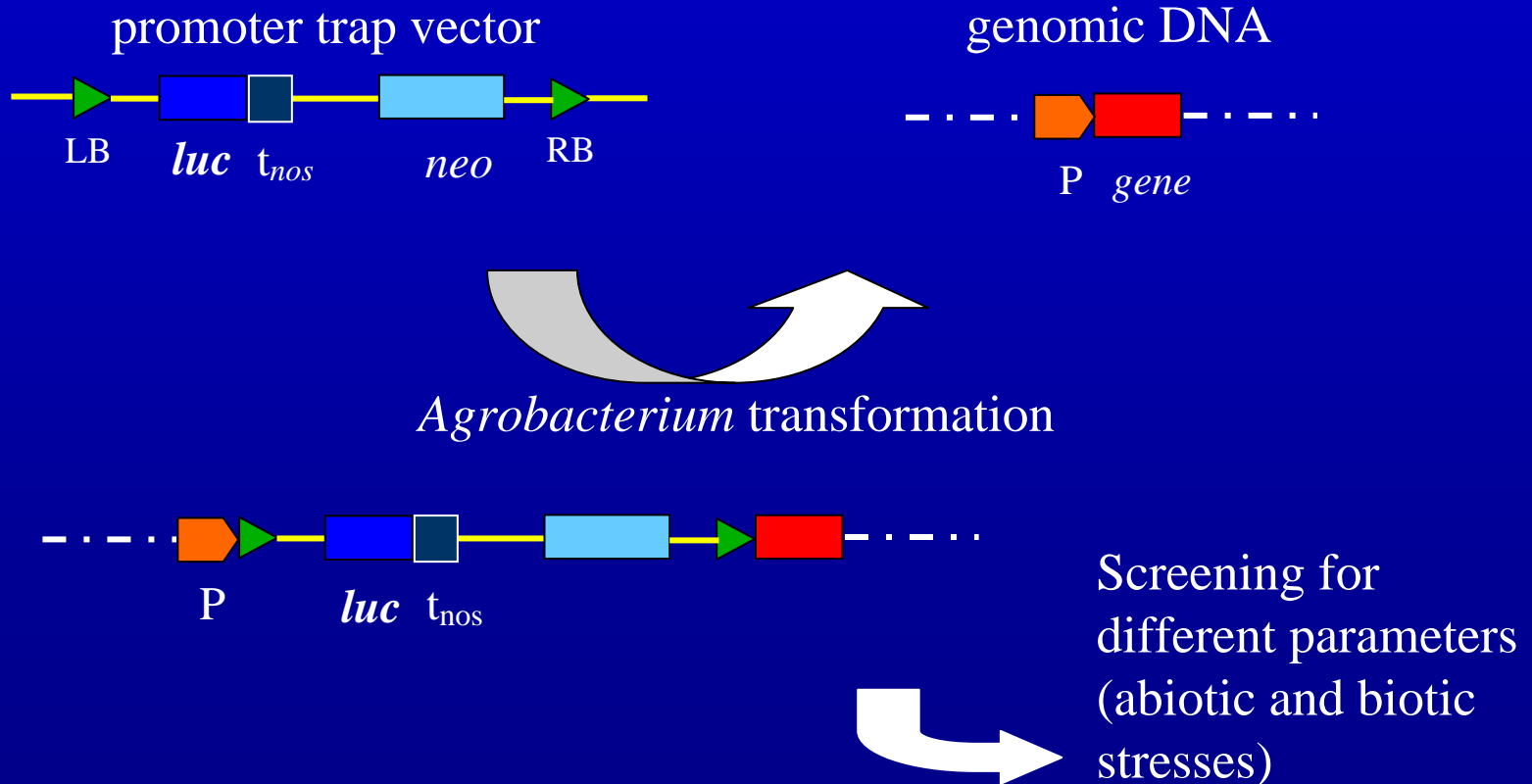
Objective

- Isolate promoters from banana (*Musa* spp.) with constitutive, tissue specific, and **cold stress** responsive expression patterns

Content

- I. The promoter tagging system
- II. Luciferase expression patterns
- III. Tagging of cold-responsive promoters
- IV. Conclusions and perspectives

I. The promoter tagging system



I. The promoter tagging system

Luciferase reporter gene

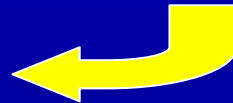


luc

- Highly sensitive
- Non destructive screenings
- Short half-life of enzyme

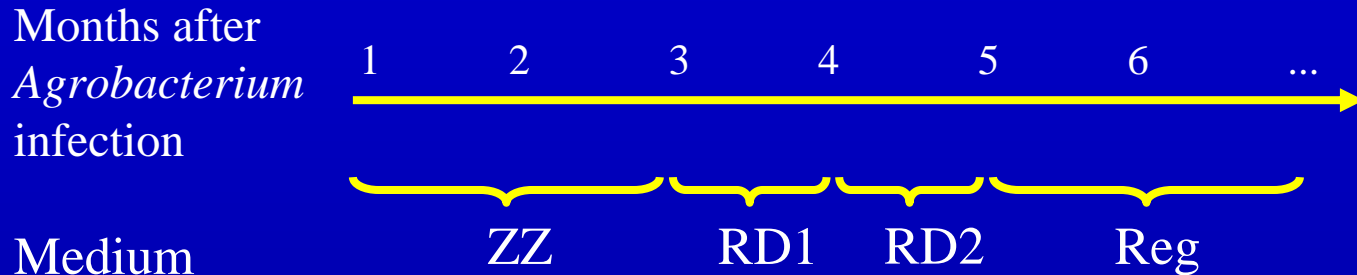


ultrasensitive digital
CCD camera system

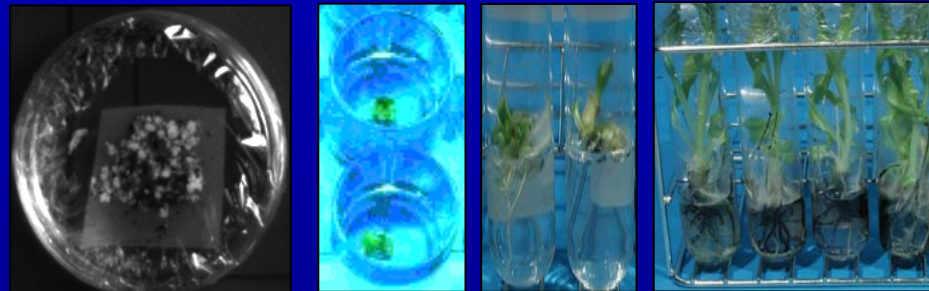


I. The promoter tagging system

High throughput screening for LUC activation



Culture



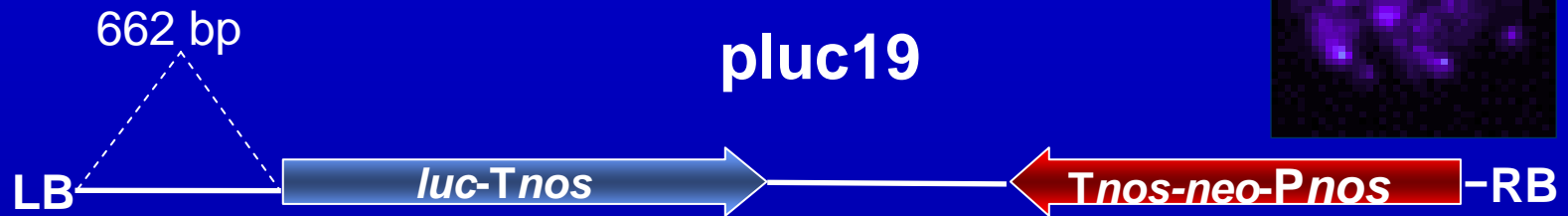
Screening

400-600/sample
5,600-8,400/image
11,000-17,000/day

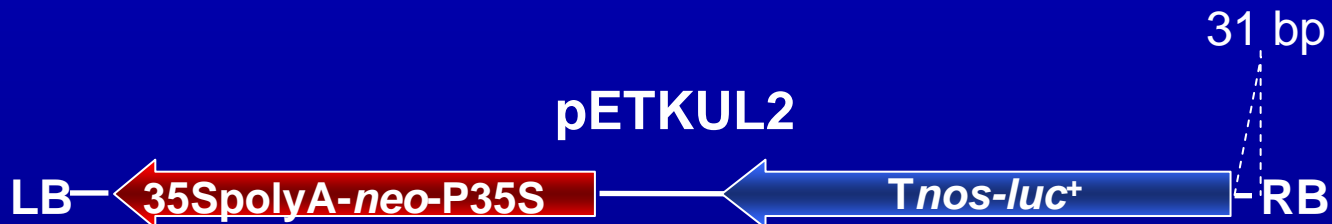
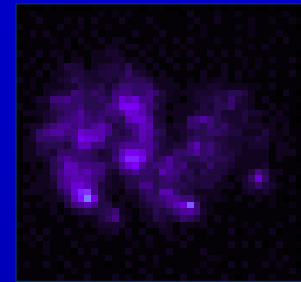


I. The promoter tagging system

Tagging constructs

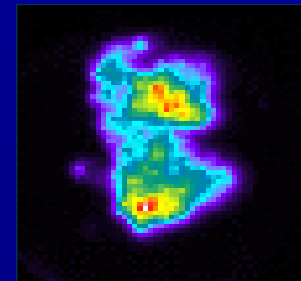


pUbi-luc



pKCKUL1

Tnos-luc⁺INT



pUbi-luc⁺

I. The promoter tagging system

Effect of tagging constructs on activation frequency

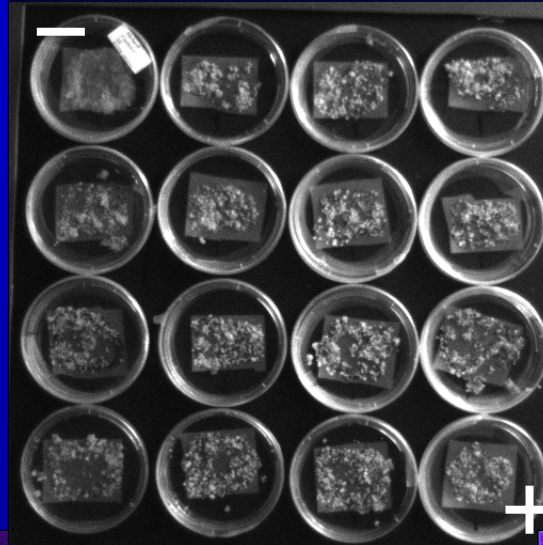
Exp.	Tagging constructs	Total # of cell colonies screened	BLA frequency* (%)
1	pluc19	1,550	0.06
	pET2	19,000	2.50
2	pET2	4,695	0.90
3	pET2	8,862	0.93
	pKC1	33,390	2.03

* Baseline luciferase activity

II. Luciferase expression patterns

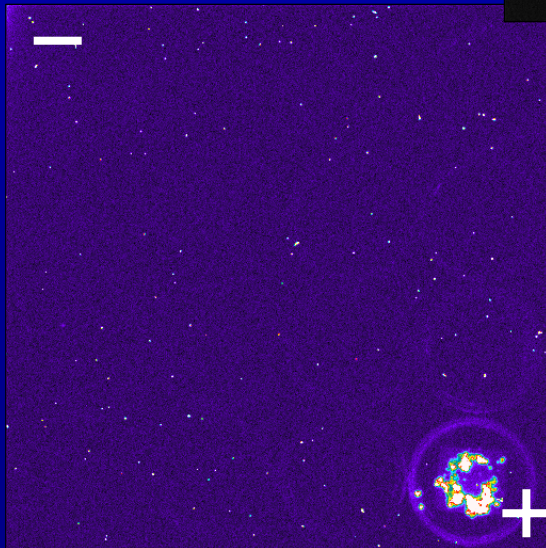
Cell colony stage

Live

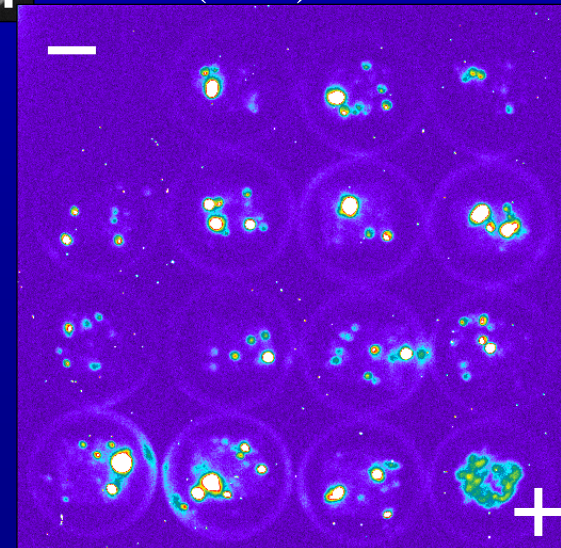


11,000 – 17,000
colonies/day

pluc19 (*luc*)
0.06%

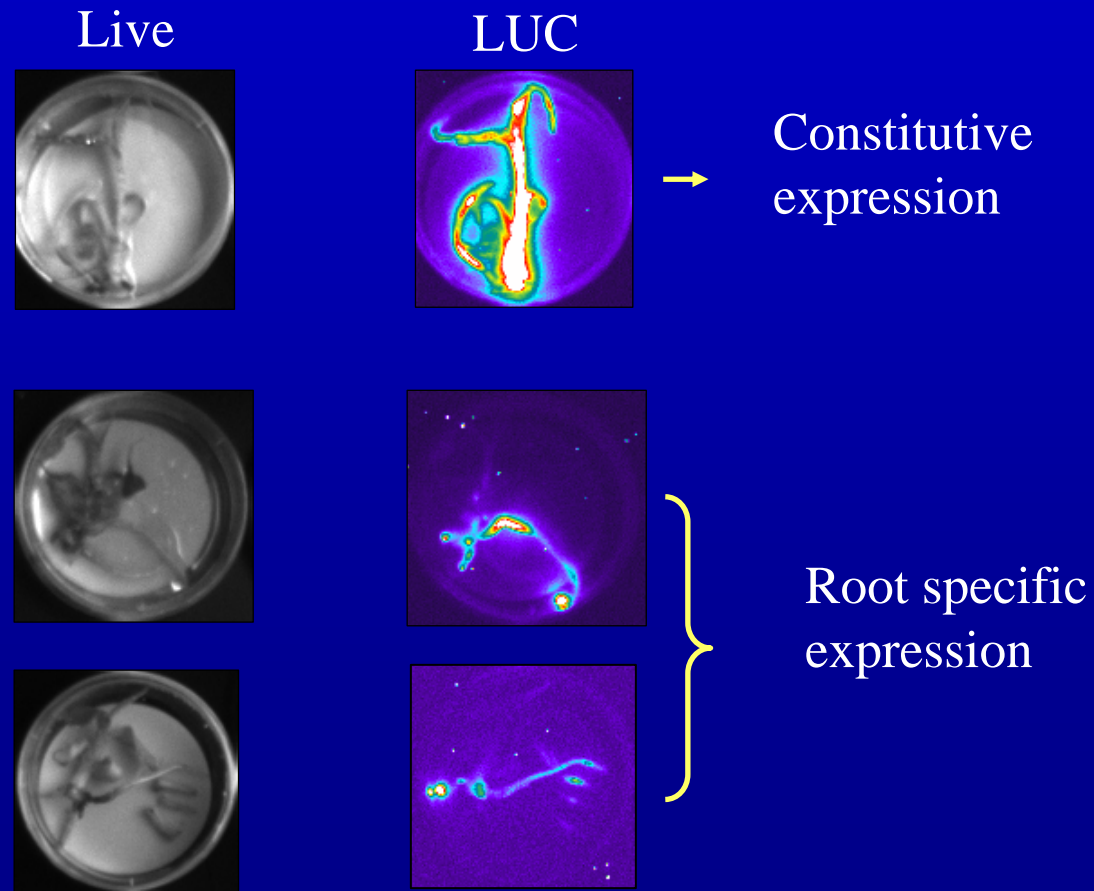


pETKUL2
(*luc*⁺) 2.5%



II. Luciferase expression patterns

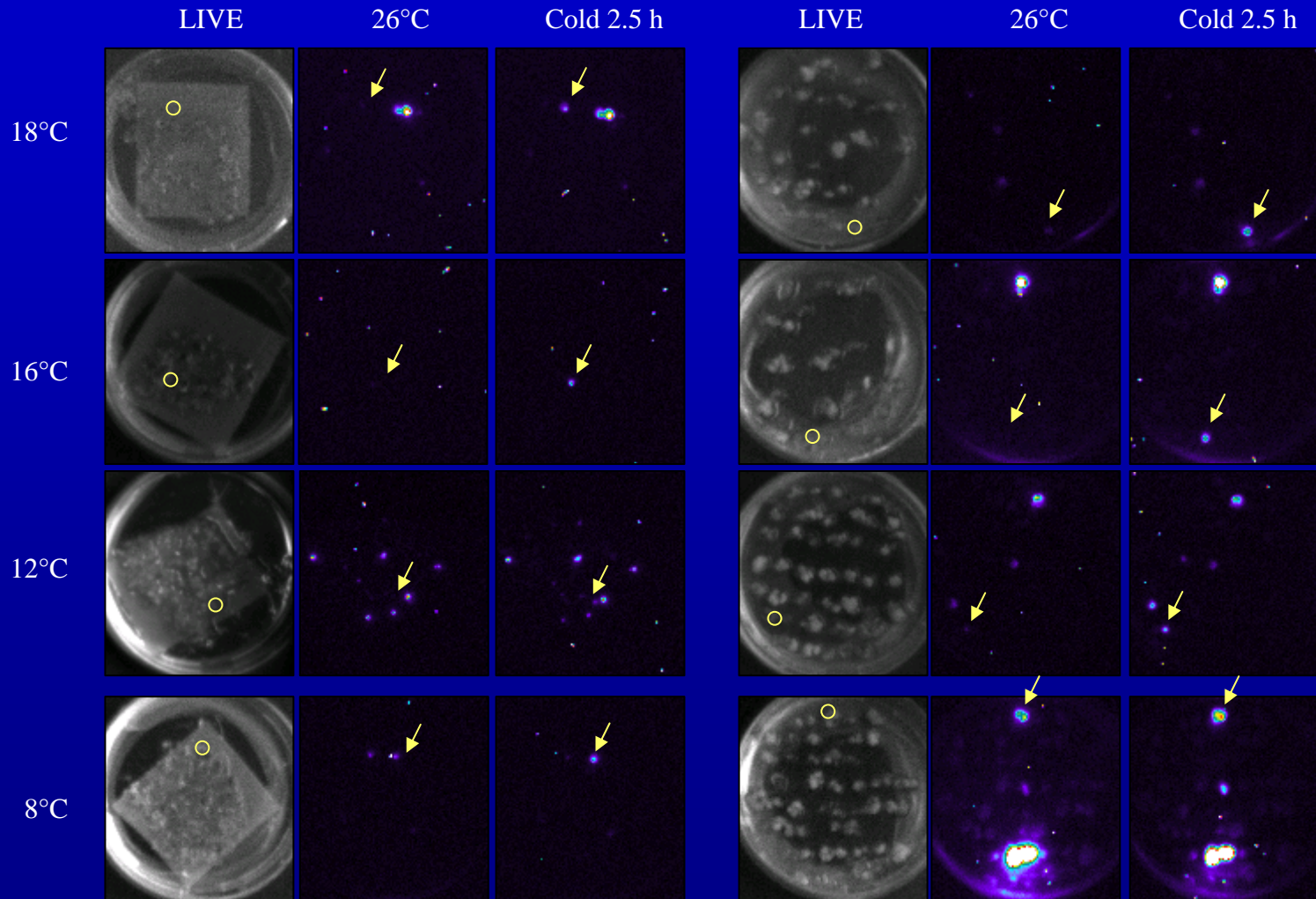
In vitro plantlet stage



III. Tagging of cold responsive promoters

2 months after transformation

4 months after transformation



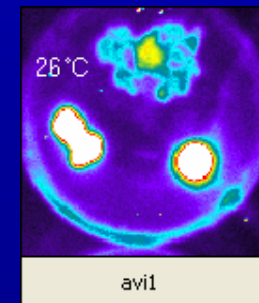
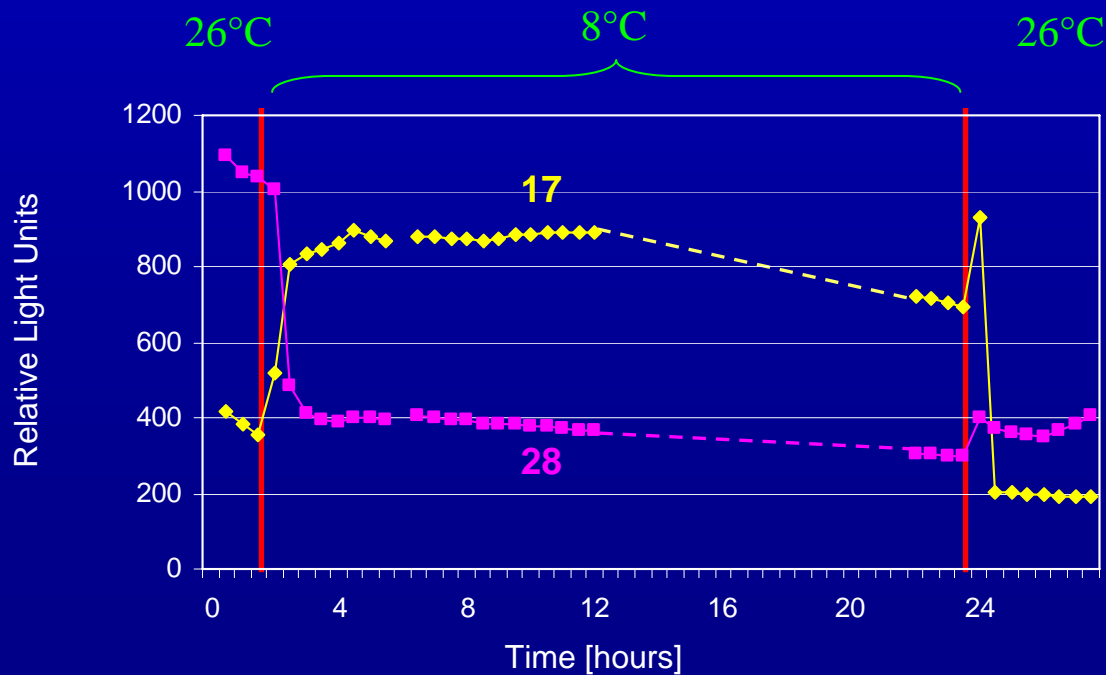
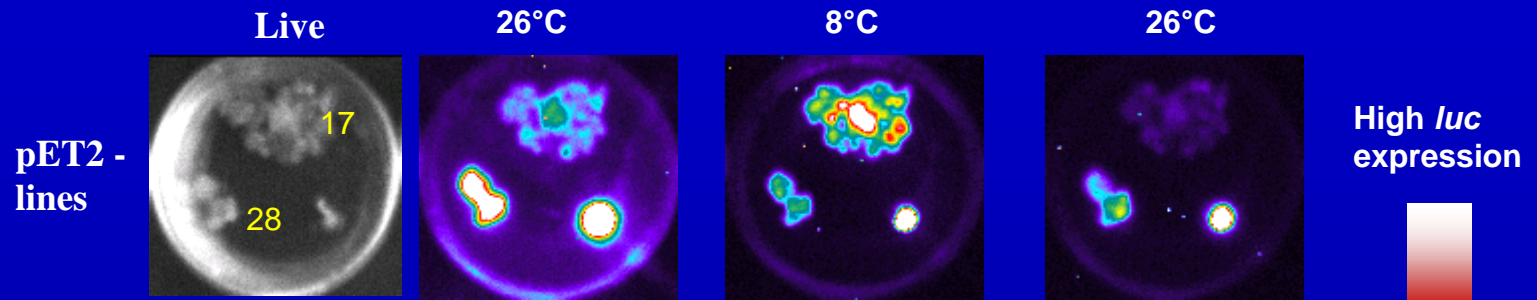
III. Tagging of cold responsive promoters

Cold responsive luciferase activity (CRLA) at 8°C of transgenic cultures (~16,000) during regeneration

	Screening for CRLA						
	1st (Colony)	2nd (Cult)	3rd (Cult)	4th (Cult)	5th (Cult)	6th (Cult)	7th (Plantlet)
Number of lines showing CRLA	106	98	42	42	42	28	26
Percentage of lines showing CRLA	0.67%	0.62%	0.26%	0.26%	0.26%	0.18%	0.16%

III. Tagging of cold responsive promoters

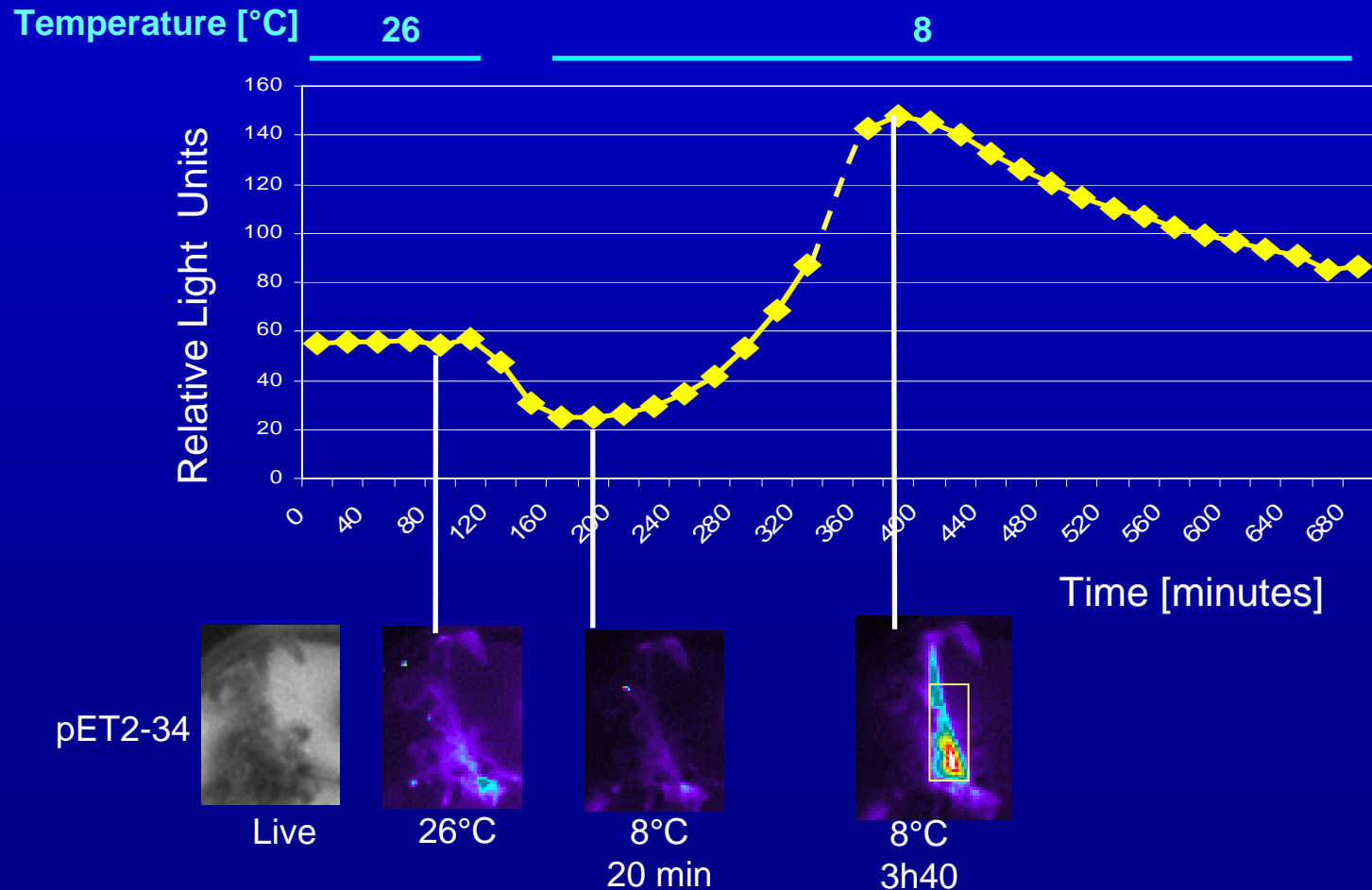
Cell culture stage



Low *luc* expression

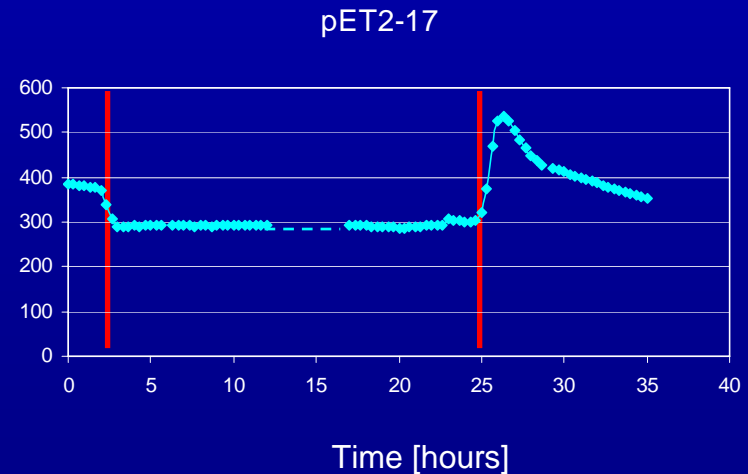
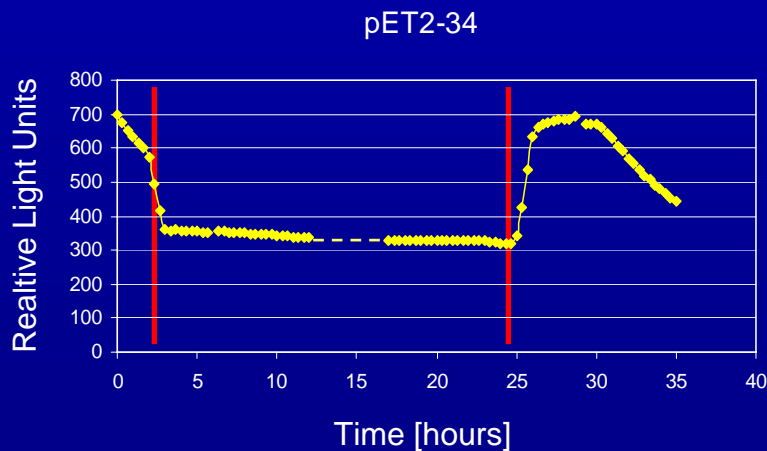
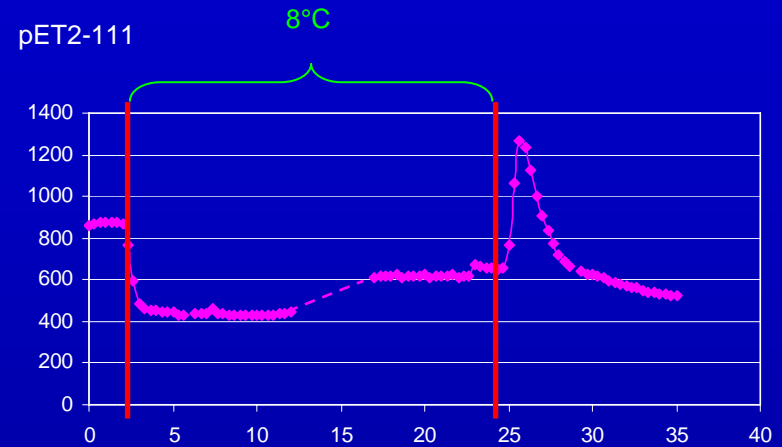
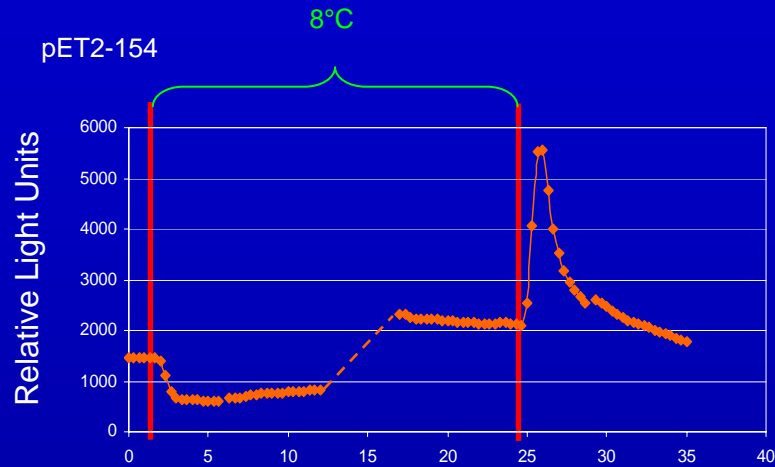
III. Tagging of cold responsive promoters

In vitro plantlet stage



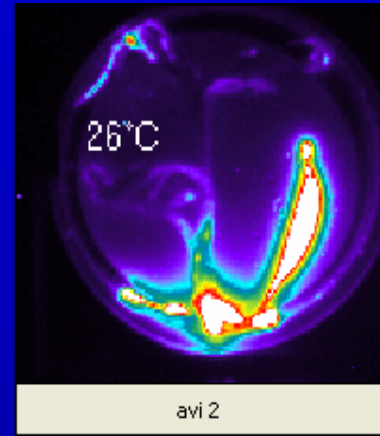
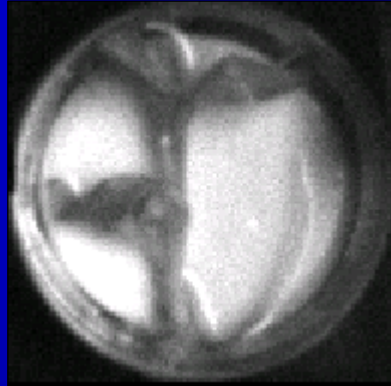
III. Tagging of cold responsive promoters

Quantification of localized LUC expression in pseudostems of *in vitro* plantlets under cold stress

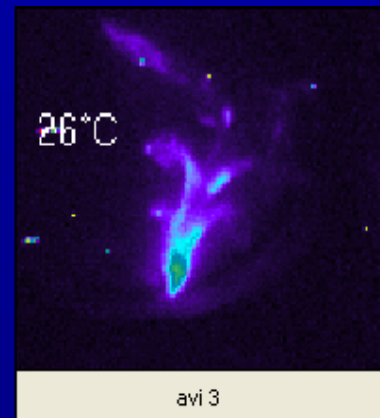
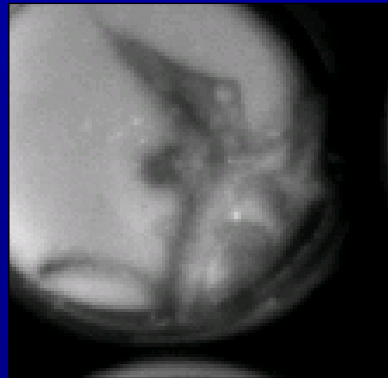


III. Tagging of cold responsive promoters

pET2-111



pET2-17



Conclusions

- Tagging constructs optimized
- Cold screening system developed
- Candidate lines obtained with enhanced and repressed CRLA patterns

Perspectives

- Confirmation of CRLA patterns in greenhouse plants
- Isolation of putative promoter sequences
- Bioinformatic analysis of promoter sequences

